

TEETH AND HAIR



**STEPHANIE BERRIE
DIANE BRONSTEIN
ELIZABETH DUFFY
CRAIG HINSHAW
JEAN-RENÉ LEBLANC
GINA LEE ROBBINS
ROSEMARY MEZA-DESPLAS
ERICA PODWOISKI
RUSSELL PRATHER
EVE PROVOST CHARTRAND
CATHERINE REINHART
GYONA RICE
RONAN SAMPSON
BRANDON C. SMITH
HANNA SOSIN**

APRIL 7

///

MAY 13

FLINT'S ARTWALK

APRIL 14 & MAY 12 // 6 - 9 PM

BUCKHAM GALLERY



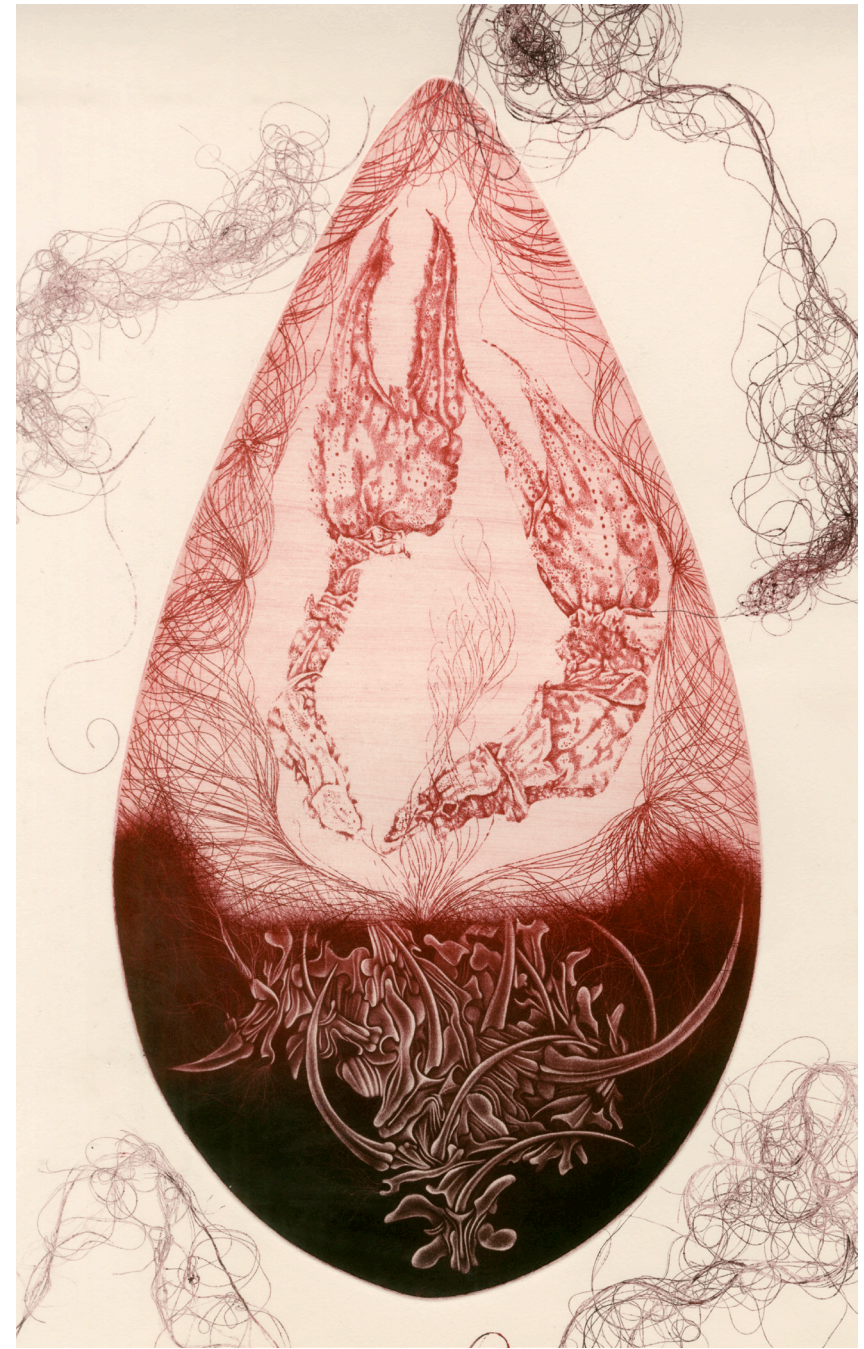


TEETH AND HAIR NATIONAL JURIED EXHIBITION

Teeth & Hair, a national juried exhibition of visual art featuring, using, or about teeth or hair and their enduring cultural significance. Lore and symbolism surrounding teeth & hair permeates every culture— for example, the infamous Tooth Fairy collects baby teeth for their nefarious deeds in exchange for coins. Many lovers have collected locks of hair from the subject of their affections to have a piece of them with them. In the animal kingdom, alligator, shark, and predator teeth are perceived as dangerously fascinating artifacts while mink, fox, and other fur is coveted as a sign of prestige and wealth. Subjectively, teeth and hair can be perceived as beautiful, grotesque, or abject.

Participating Artists: Stephanie Berrie, Diane Bronstein, Elizabeth Duffy, Craig Hinshaw, Jean-René Leblanc, Gina Lee Robbins, Rosemary Meza-DesPlas, Erica Podwoiski, Russell Prather, Ève Provost Chartrand, Catherine Reinhart, Gyona Rice, Ronan Sampson, Brandon C. Smith, and Hanna Sosin

Stephanie Berrie
Roadkill Diaries Entry 06: Claw Your Way Out of the Abyss
Soft and hard ground etching with mezzotint, human hair, monotype
20" x 11"





Diane Bronstein
The Young Krivopeta
Embroidered photograph on stretched canvas
26" x 15"



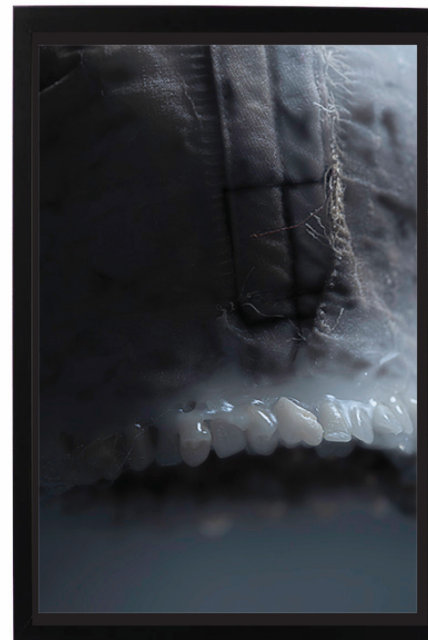
Elizabeth Duffy
Dog Hair Embroidered
Dog hair embroidered with the artist's hair
5" x 4"



Craig Hinshaw
Mourning Mirror
Ceramic, yarn, mirror
13" x 11"

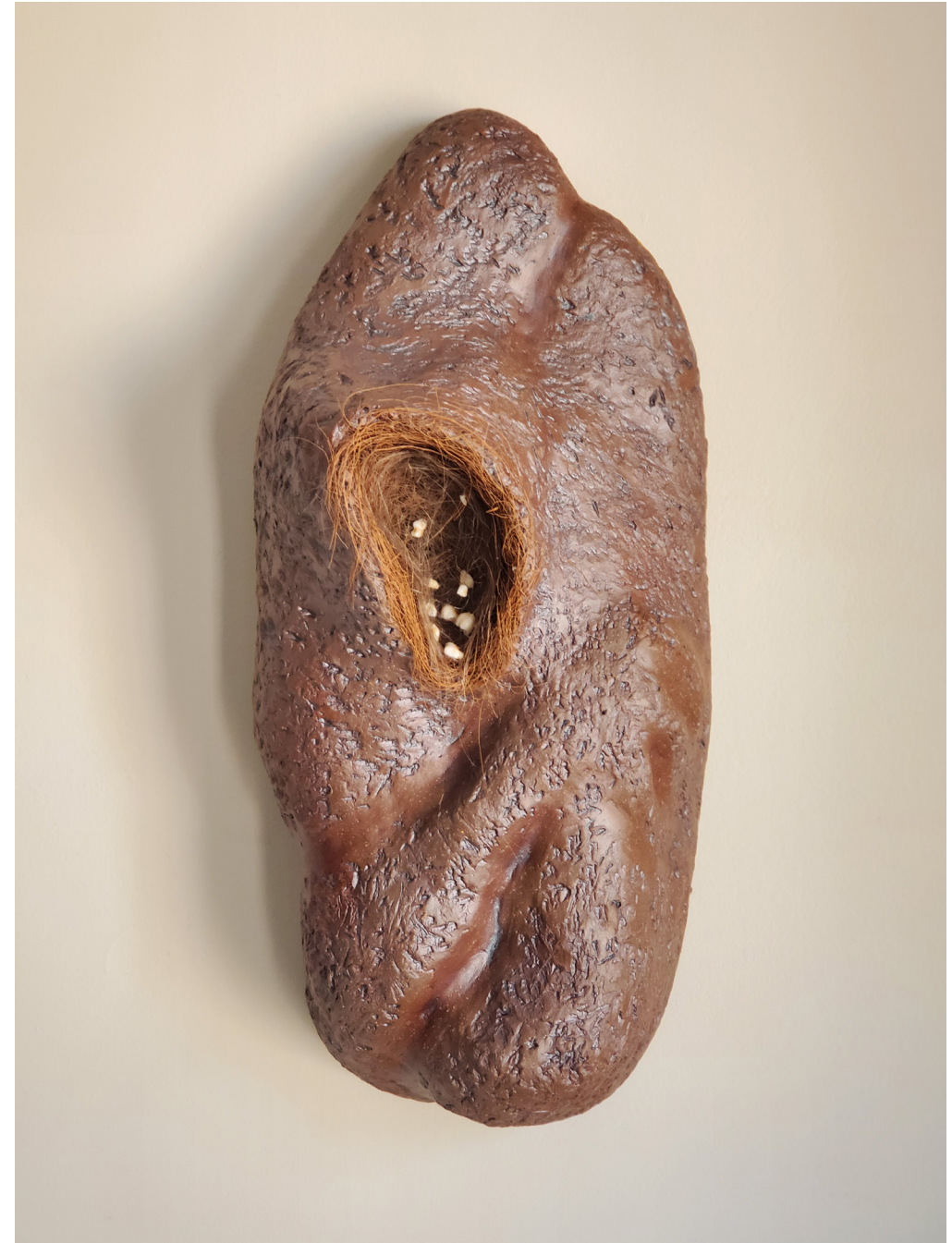


Jean-René Leblanc and Ève Provost Chartrand
Holobiont_9
Photograph
36" x 26" each





Gina Lee Robbins
Empty
Stoneware, iron oxide, glaze, found bird's nest, human teeth
18" x 8" x 8"



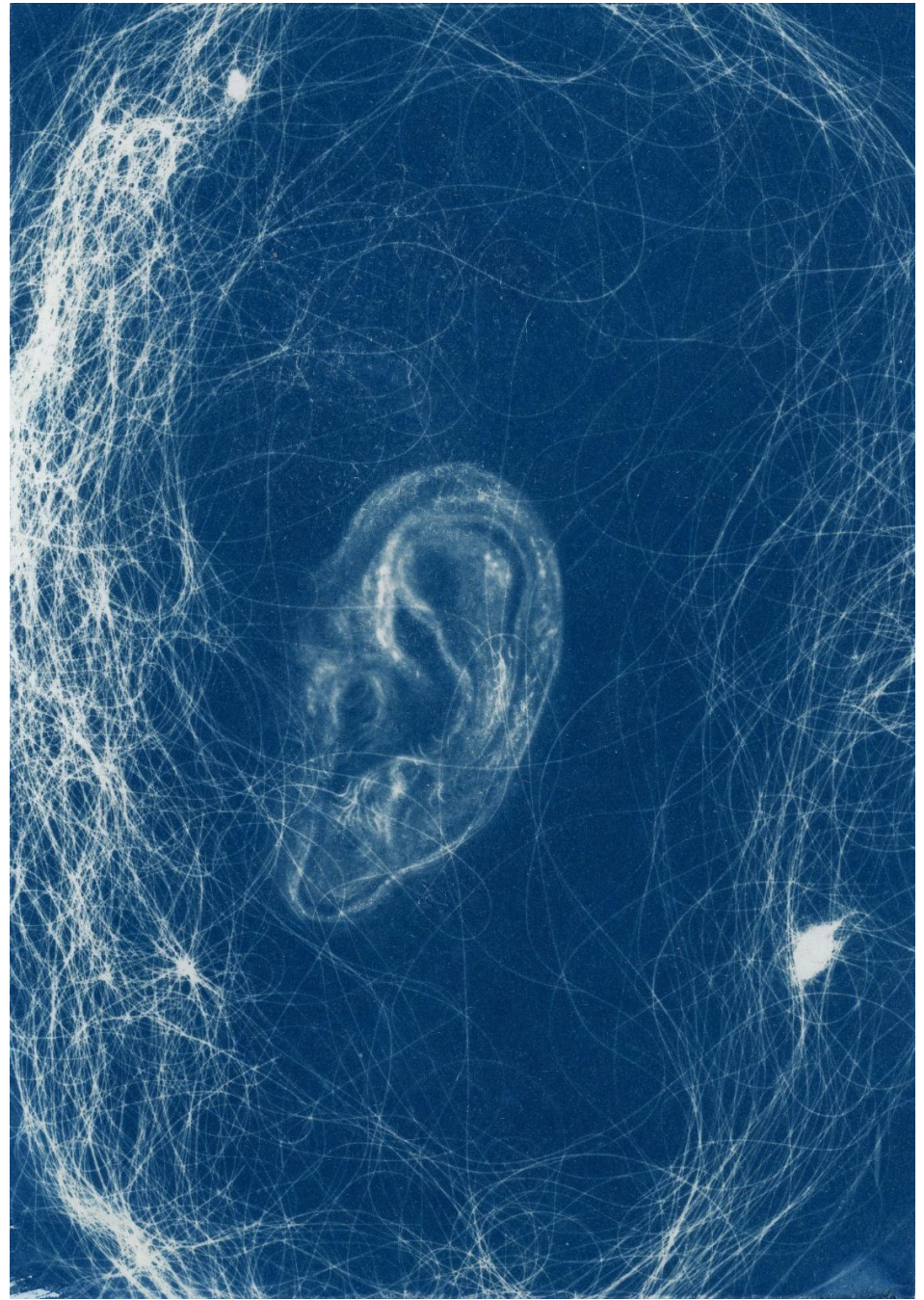


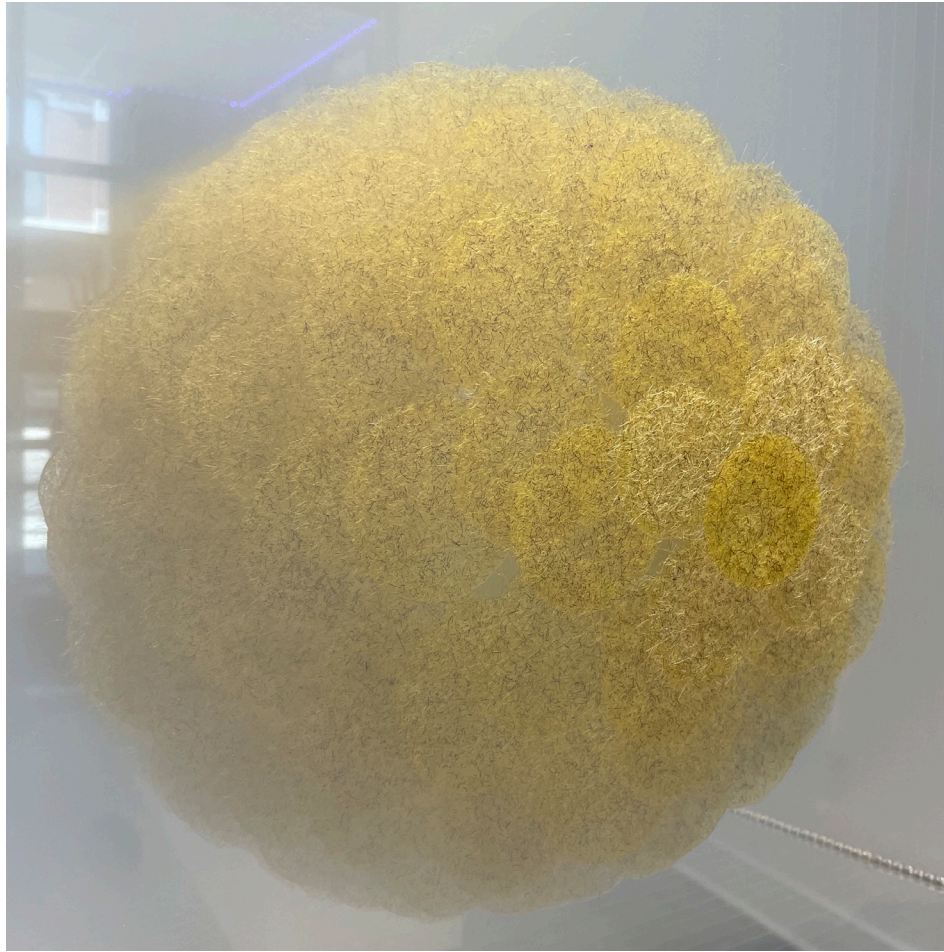


Rosemary Meza-DesPlas
Personages
Handstitched human hair
13" x 10"



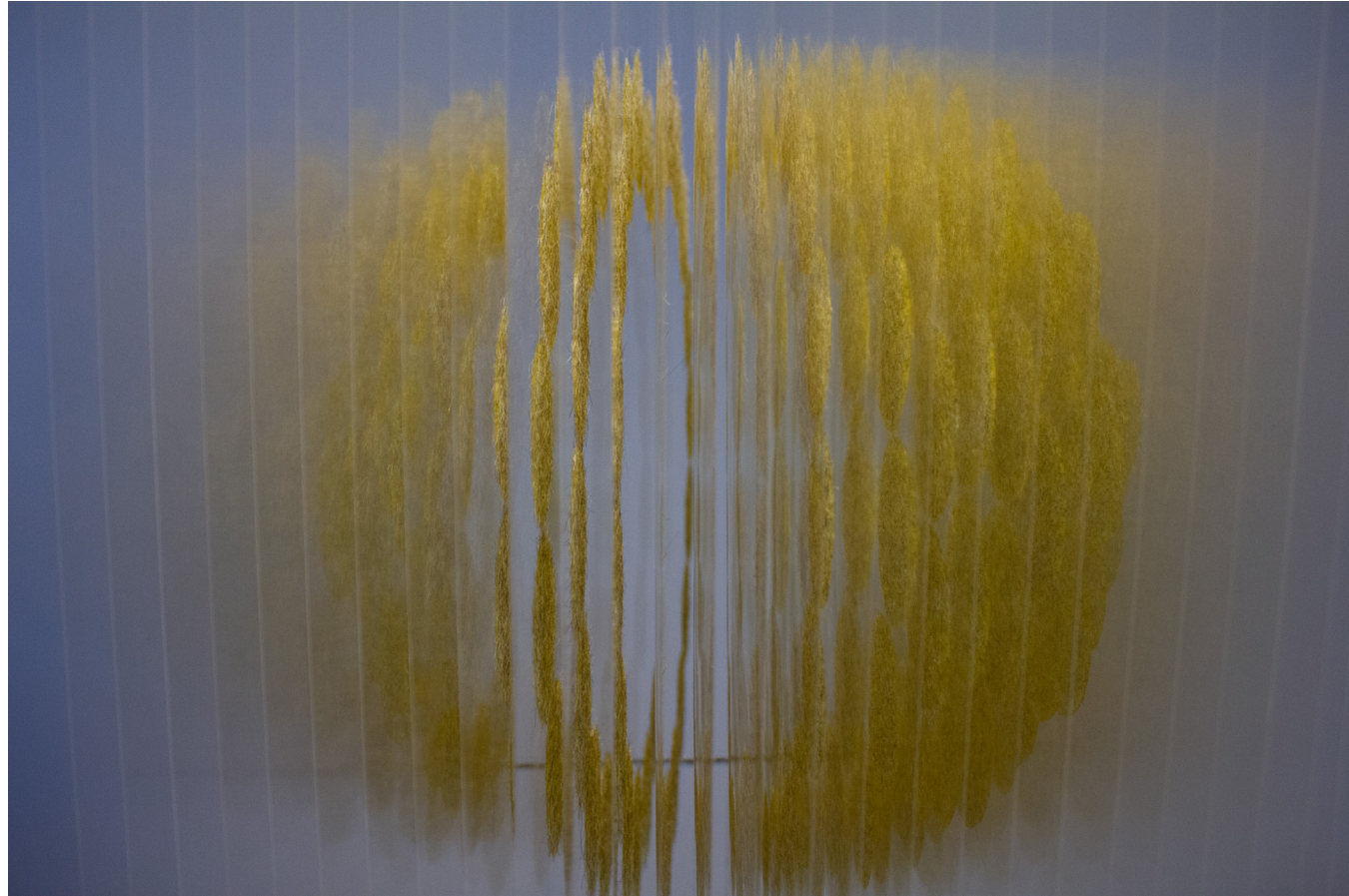
Erica Podwoiski
Ear Beard #1
Cyanotype on paper
11.5" x 10"





Russell Prather
Hair Ball
Tinted acrylic medium, human hair on layers of polyester film
24" x 19" x 15.5"





Russell Prather
Hair Ball
Tinted acrylic medium, human hair on layers of polyester film
24" x 19" x 15.5"



Ève Provost Chartrand
My Mother's Mouth
Mixed media sculpture & marble plinth
5" x 7"



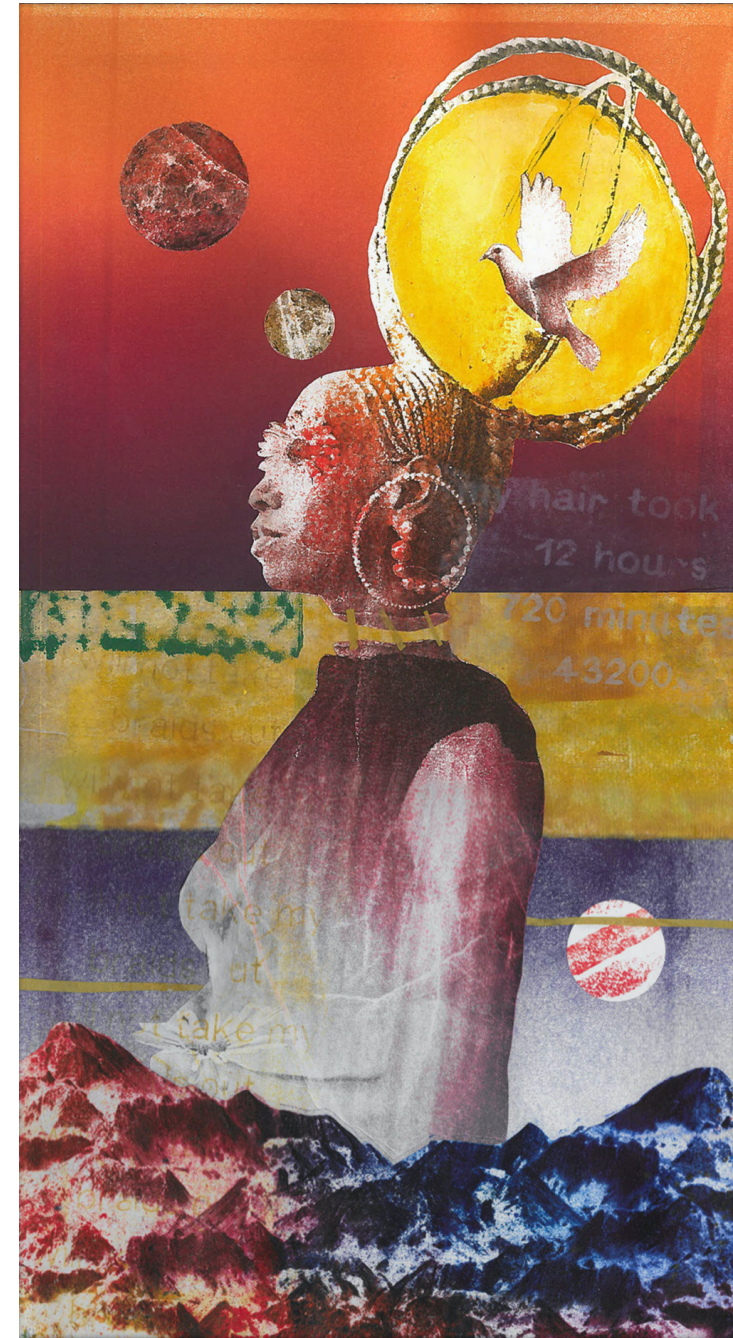


Catherine Reinhart
Objects of Calamity
Sculpture: wax, hair of mother and son
3" x 8" x 8"

Gyona Rice
Black Hair Chronicles (Erykah Badu)
Lithography, watercolor, paper, ink
24" x 18"



Gyona Rice
Black Hair Chronicles (Solange)
Lithography, watercolor, paper, ink
24" x 18"



Gyona Rice
Black Hair Chronicles (Cicely Tyson)
Lithography, watercolor, paper, ink
24" x 18"

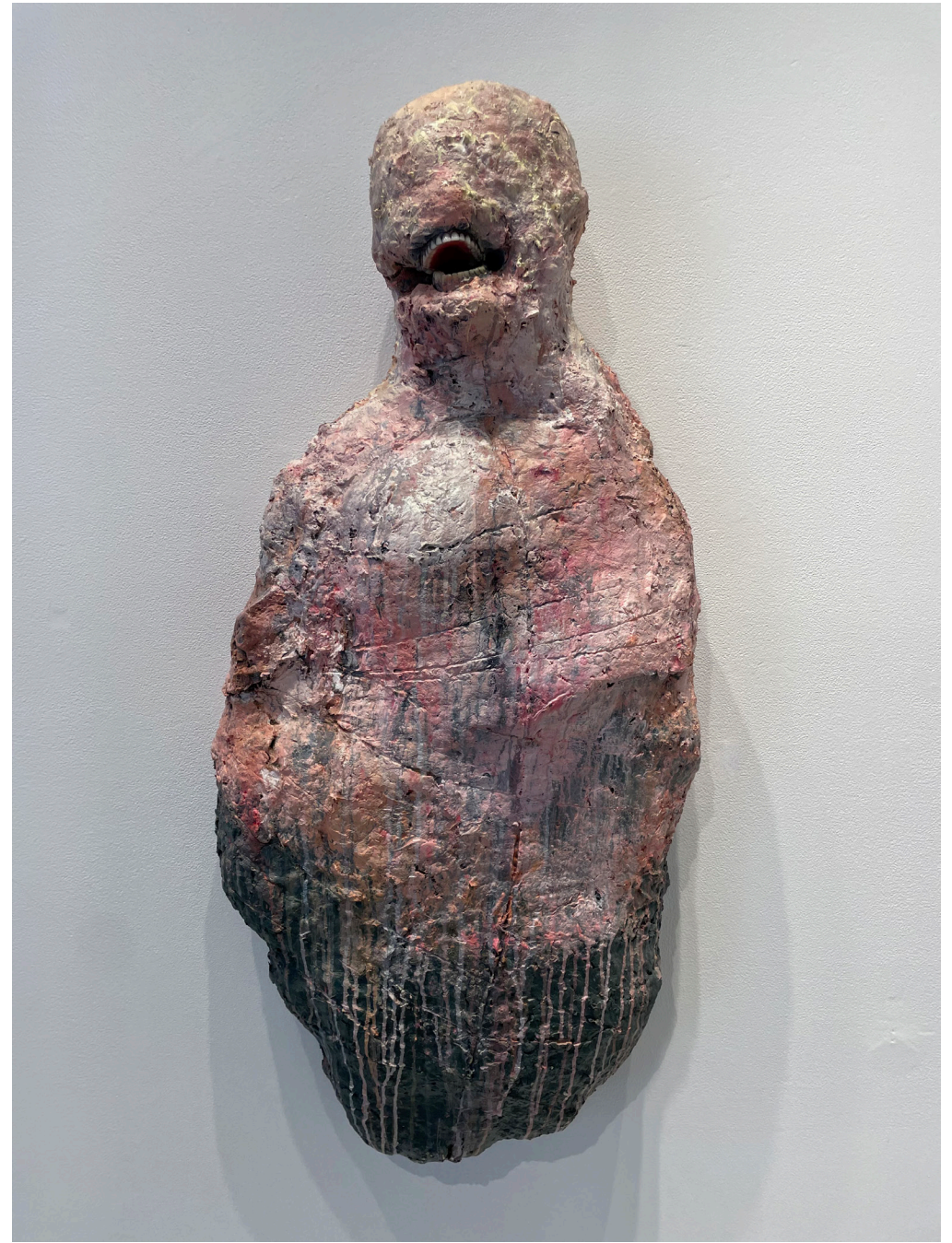


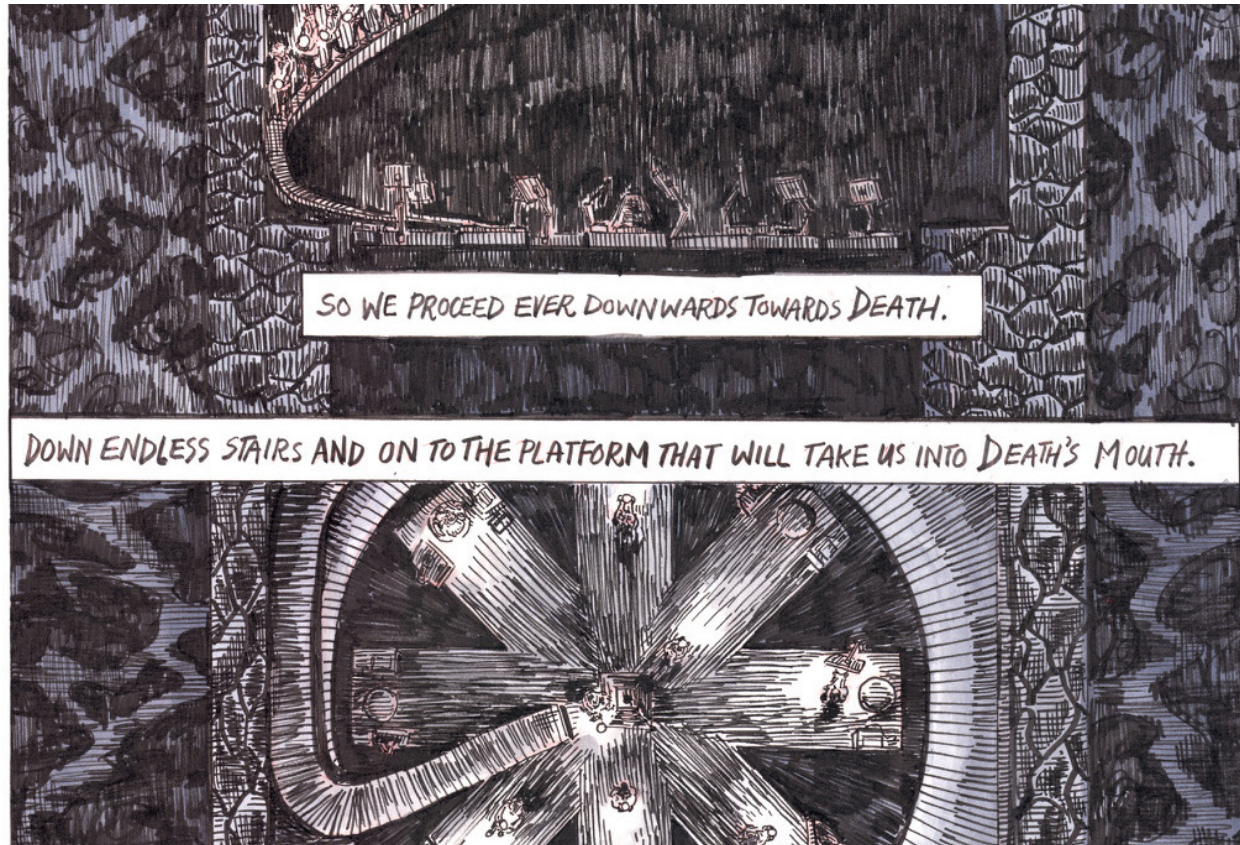
Ronan Sampson
Extraction
Terracotta, acrylic paint, PLA 3D print, acrylic sheet, dirt, gauze
13" x 7" x 6"



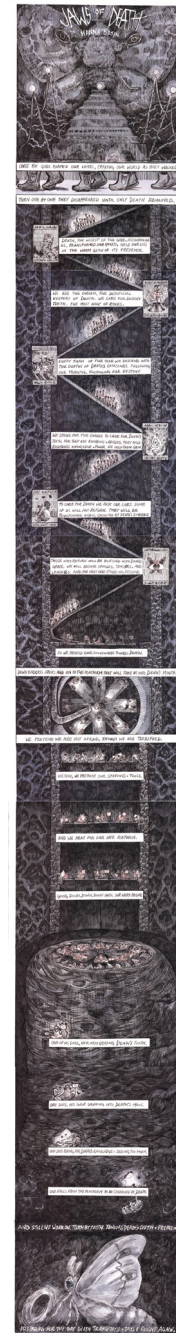


Brandon C. Smith
Outrage II- Indulge the Other
Paper mache, acrylic, paint, teeth, plaster
44" x 22" x 8"





Hanna Sosin
Jaws of Death
Ink on paper
81" x 11"







ABOUT BUCKHAM GALLERY

It is the mission of Buckham Gallery to enrich the cultural life of its surrounding communities by presenting a broad range of innovative contemporary art, both visual and performance, of the highest quality and standard.

Buckham Gallery is a 501(c)3 non-profit organization located in downtown Flint, Michigan. The gallery has been an anchor of the Flint art community since its inception in 1984. Founded by a collective of area artists, arts professors, and arts professionals, gallery operations, exhibitions, and programming continue to be led by artists and arts professionals.

For more information about Buckham Fine Arts Project, please visit www.buckhamgallery.org

Buckham Fine Arts Project is supported in part by an award from the MICHIGAN ARTS AND CULTURE COUNCIL and the NATIONAL ENDOWMENT FOR THE ARTS, the Charles Stewart Mott Foundation, and the Greater Flint Arts Council Share Art Genesee Grant Program. Program made possible by the Genesee County Arts Education and Cultural Enrichment Millage funds. Your tax dollars are at work!





121 W 2nd St Flint MI 48502
www.buckhamgallery.org